

>new rig!



Click here to download your **JULY** Calendar

James Farnsworth

## Welcome to RGS insite issue 25

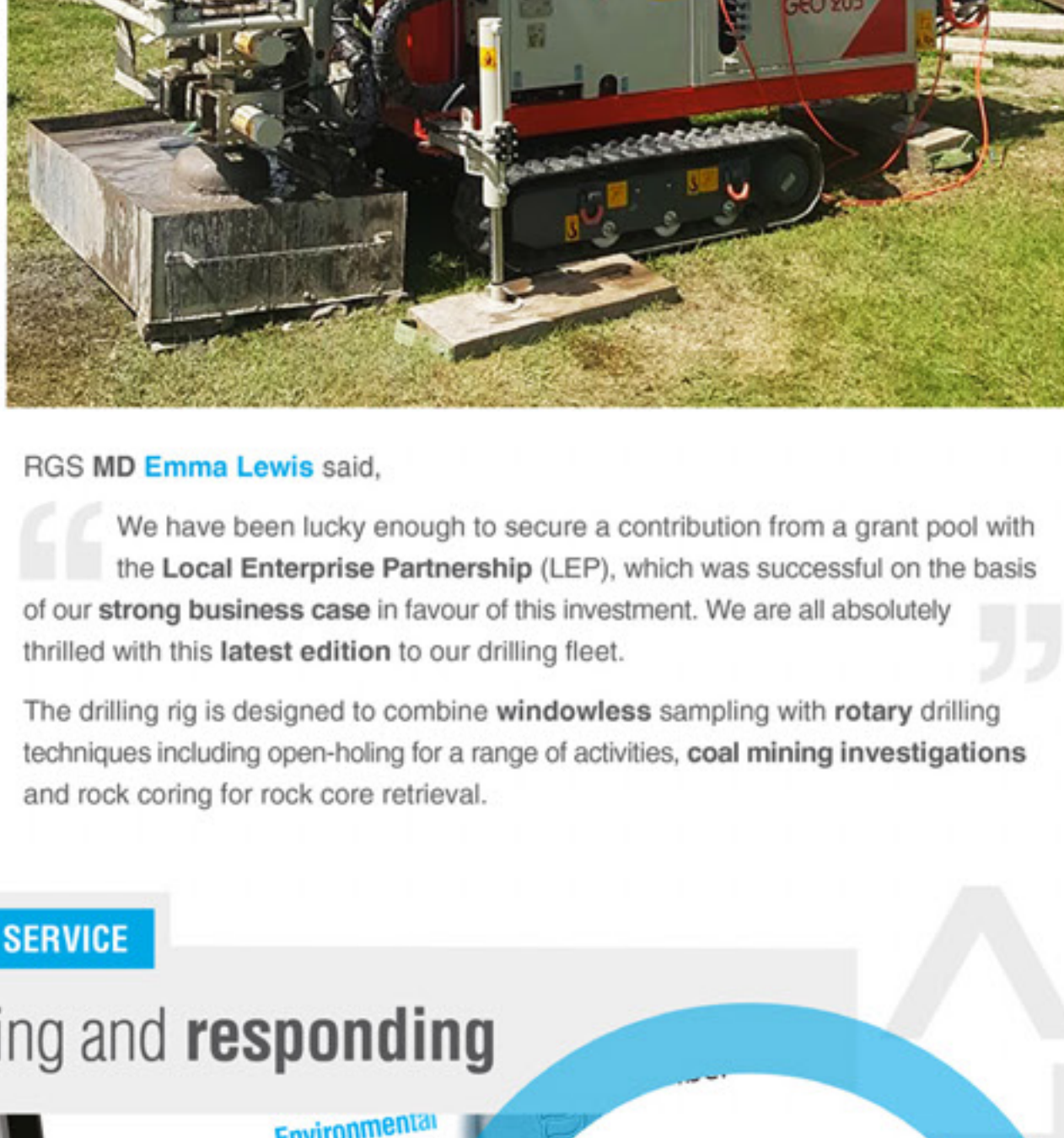
Our regular newsletter celebrating more than a decade of drilling, keeping you up to date with RGS and industry news.

Rogers Geotechnical Services Ltd are site investigation specialists offering ground investigation and geotechnical services to developers, builders, structural and consulting engineers, architects, insurance companies, local authorities, piling and foundation engineers, private individuals and other geotechnical consultants.

## Drilling Deep

This month's highlight saw us take delivery of our new **Commacchio Geo205** combined windowless sampling and rotary drilling rig. It's given everybody at RGS a fantastic boost!

The purchase represents a significant investment for RGS - improving our capability on site. The Geo205 replaces our much older and 'worn' out drilling rig and improves our offering all round, for both our clients and also the crews running our drilling rigs.



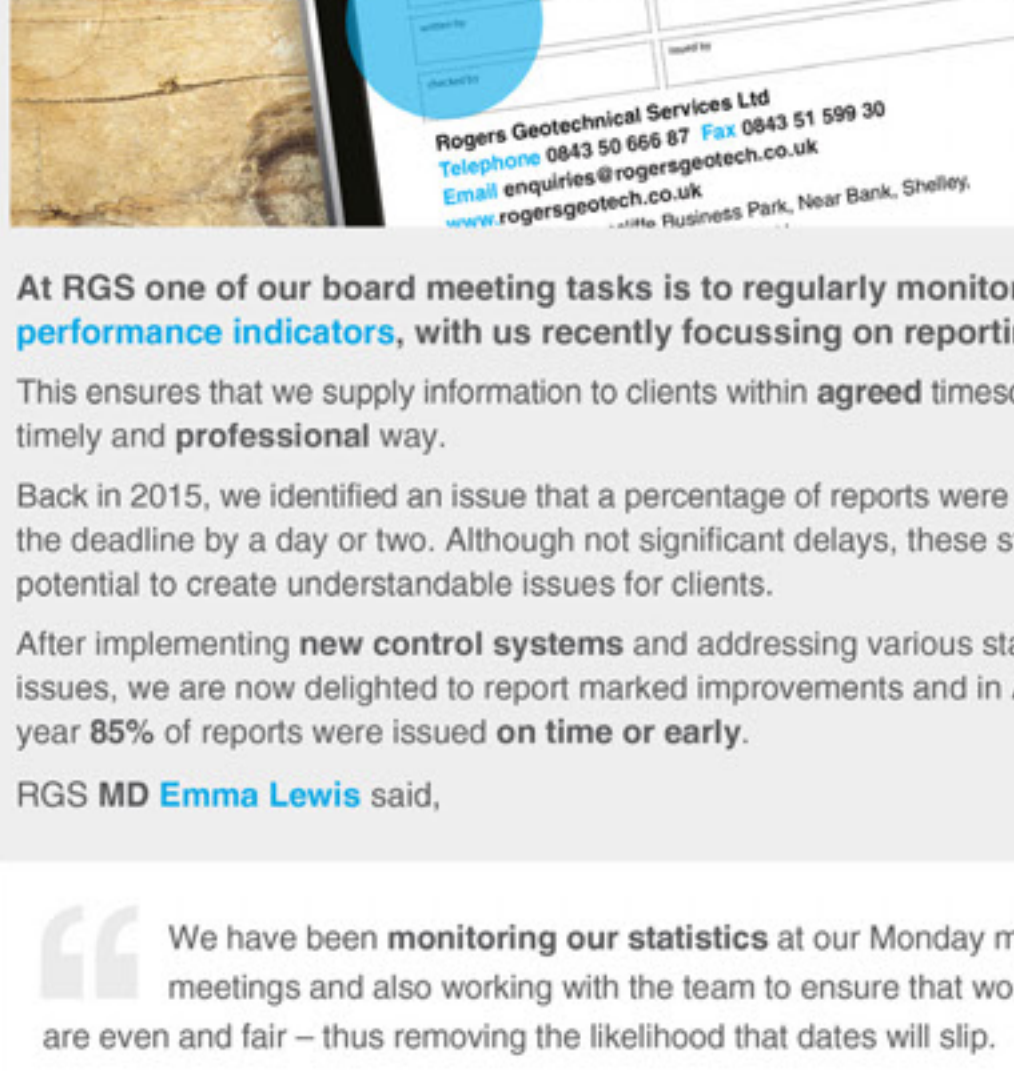
RGS MD **Emma Lewis** said,

“ We have been lucky enough to secure a contribution from a grant pool with the **Local Enterprise Partnership (LEP)**, which was successful on the basis of our **strong business case** in favour of this investment. We are all absolutely thrilled with this **latest edition** to our drilling fleet.

The drilling rig is designed to combine **windowless** sampling with **rotary** drilling techniques including open-holing for a range of activities, **coal mining investigations** and rock coring for rock core retrieval.

### CUSTOMER SERVICE

## Reporting and responding



At RGS one of our board meeting tasks is to regularly monitor our **key performance indicators**, with us recently focussing on reporting data. This ensures that we supply information to clients within **agreed timescales**, in a timely and **professional** way.

Back in 2015, we identified an issue that a percentage of reports were issued past the deadline by a day or two. Although not significant delays, these still had the potential to create understandable issues for clients.

After implementing **new control systems** and addressing various staffing issues, we are now delighted to report marked improvements and in April this year **85%** of reports were issued on **time or early**.

RGS MD **Emma Lewis** said,

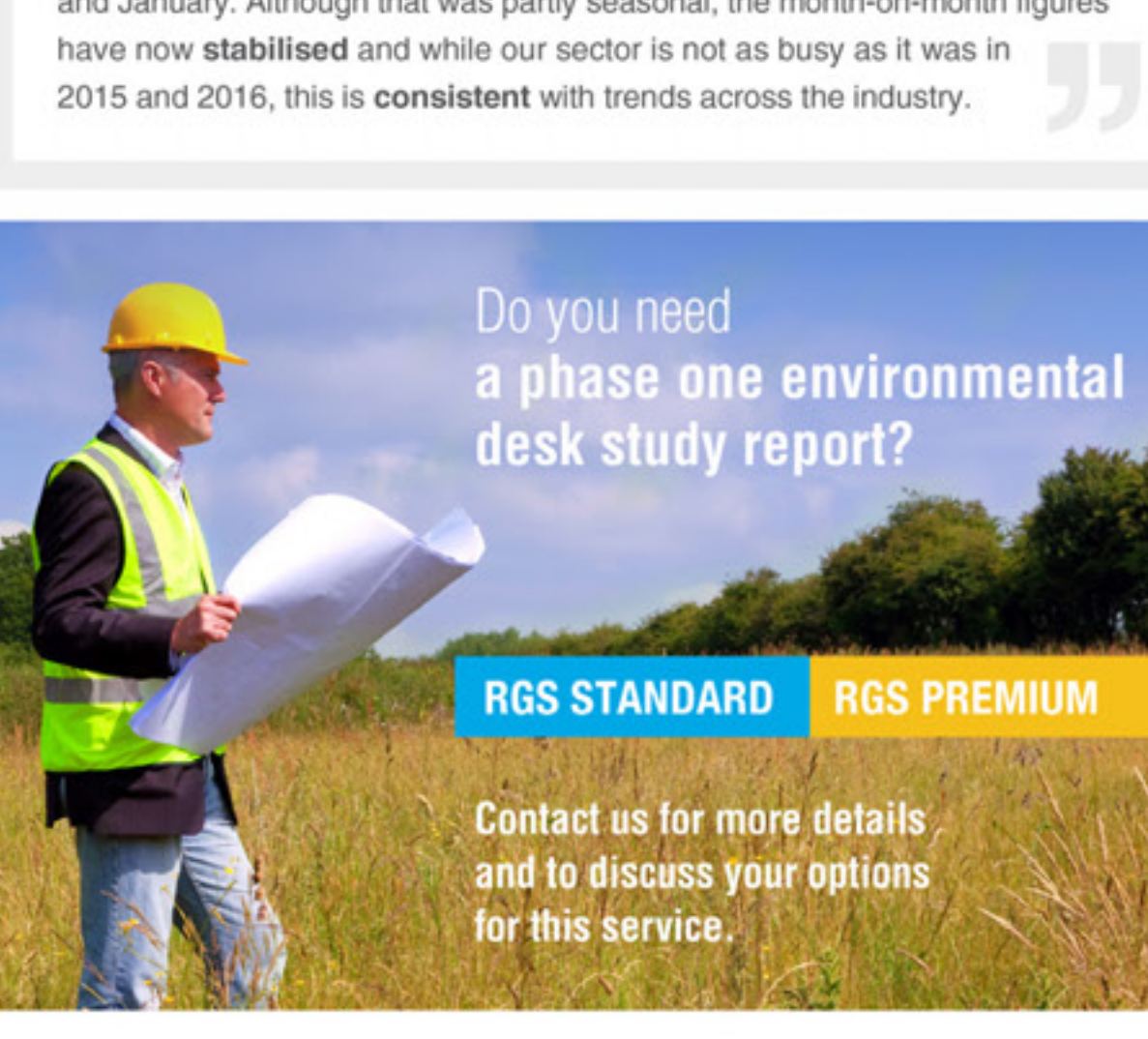
“ We have been **monitoring our statistics** at our Monday morning meetings and also working with the team to ensure that workloads are even and fair – thus removing the likelihood that dates will slip.

We also acknowledge that ground investigations can be tricky to predict and if we are likely to miss the deadline, by a day or two, then we **communicate** the reasons and update and advise our clients - an **open approach** which is always **welcomed**.

So it's **good news** all round!

### BUSINESS CONFIDENCE

## Economic factors



We wrote last month about industry **uncertainty** ahead of the General Election and Brexit negotiations.

RGS MD **Emma Lewis** said,

“ While the election result did little to stabilise markets, we are now ticking along nicely - it's **far busier** than the quiet patch in December and January. Although that was partly seasonal, the month-on-month figures have now **stabilised** and while our sector is not as busy as it was in 2015 and 2016, this is **consistent** with trends across the industry.



Do you need a phase one environmental desk study report?

**RGS STANDARD** **RGS PREMIUM**

Contact us for more details and to discuss your options for this service.

### JOB FILE

## From industry to agriculture



RGS recently completed an interesting job at a former **salt works** in Northern England on behalf of a client who plans to **re-designate** the site for agricultural use, including the rearing of **cattle and wild fowl**.

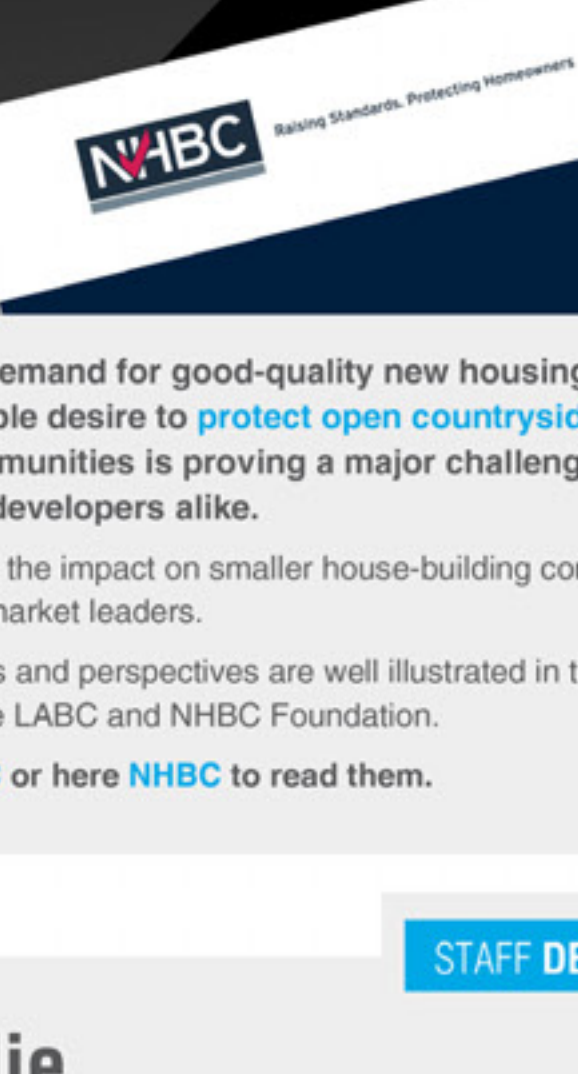
Prior to submitting our full report, RGS conducted:

- A DETAILED **PHASE 1 ENVIRONMENTAL & GEOTECHNICAL SURVEY**
- A **SITE VISIT** BY OUR OPS DIRECTOR AND SUPERVISING ENGINEER with a site specific risk assessment and remediation methodology.

The site works were carried out using a **Premier Tracker 110 windowless sampling drilling rig**, which was tracked onto the lagoons using boards, to prevent the rig from sinking into the material.

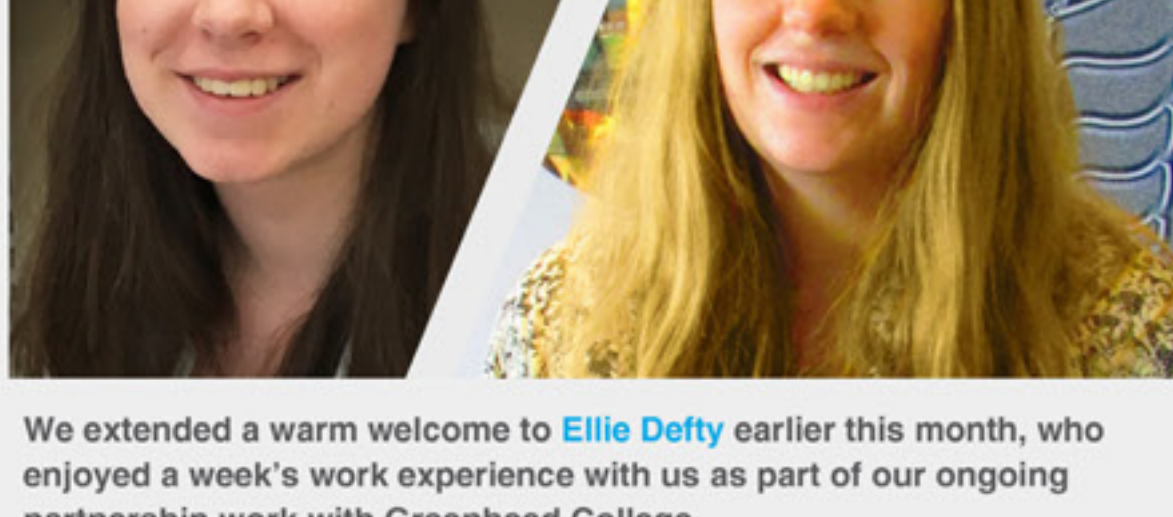
The works were fully supervised by **James Farnsworth** (pictured right) who worked closely with the groundworks contractor on site, who cleared access to the site, provided the excavator for the trial pits and was also on hand to assist with emergency procedures for the plant in the event that it became unstable.

We will be publishing a full case study in **next month's** issue of insite.



### INDUSTRY DEBATE

## Greenbelt development



The ever-increasing demand for **high-quality new housing** and the public's understandable desire to **protect open countryside** around long-established communities is proving a major challenge for both local authorities and developers alike.

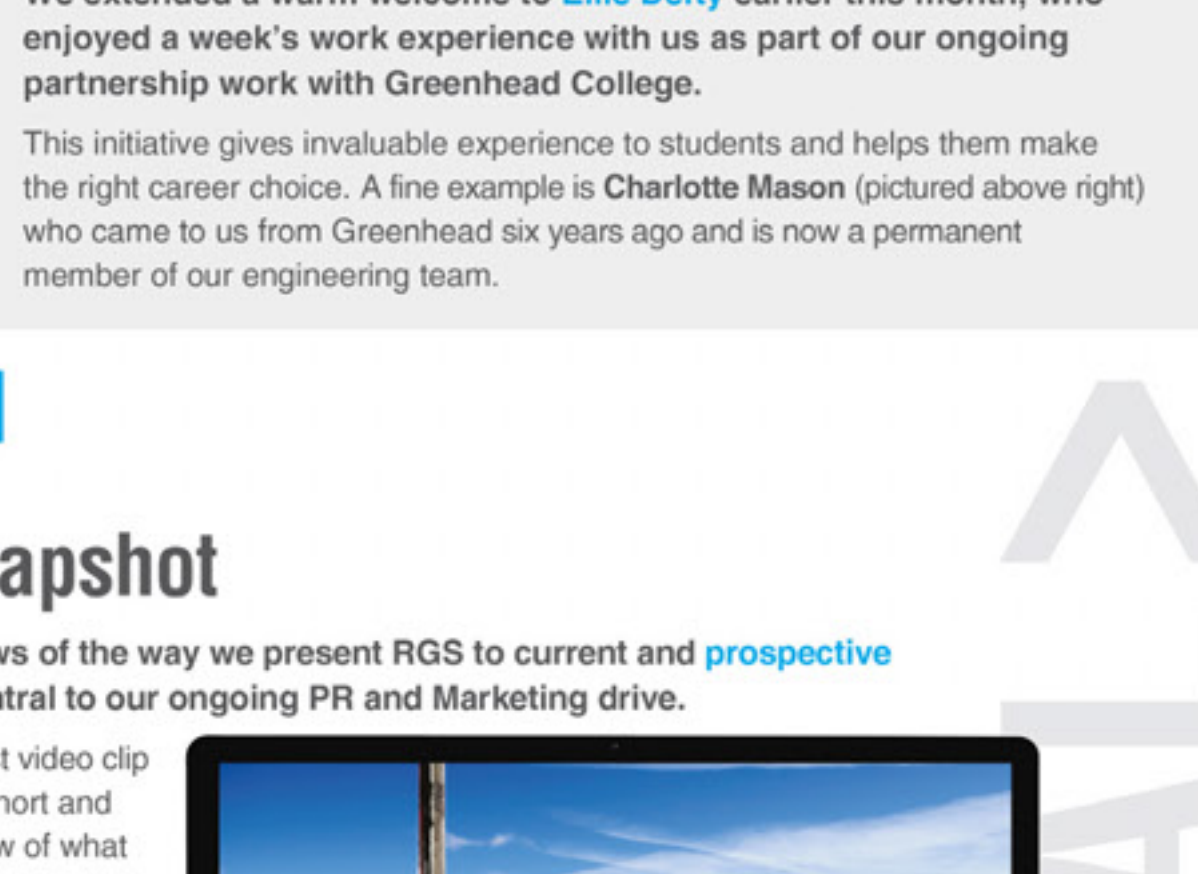
Particularly interesting is the impact on smaller house-building companies as they try to compete with the market leaders.

Their different viewpoints and perspectives are well illustrated in two papers, recently published by the LABC and NHBC Foundation.

Simply click here **LABC** or here **NHBC** to read them.

### STAFF DEVELOPMENT

## Welcome Ellie



We extended a warm welcome to **Ellie Defty** earlier this month, who enjoyed a week's work experience with us as part of our ongoing partnership work with Greenhead College.

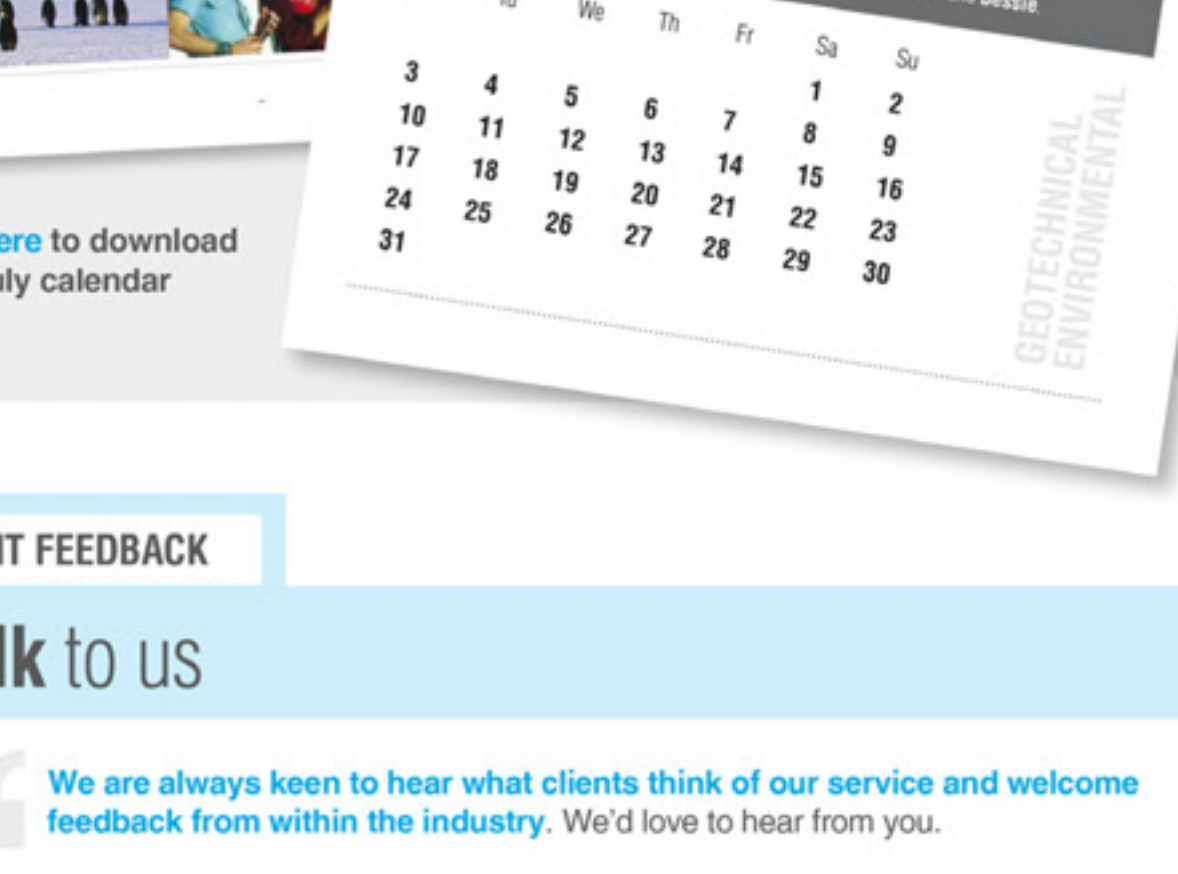
This initiative gives invaluable experience to students and helps them make the right career choice. A fine example is **Charlotte Mason** (pictured above right) who came to us from Greenhead six years ago and is now a permanent member of our engineering team.

### MARKETING

## RGS snapshot

Regular reviews of the way we present RGS to current and **prospective clients** are central to our ongoing PR and Marketing drive.

To see our latest video clip which gives a short and snappy overview of what we do **click here**.



### RGS CALENDAR JULY



Click here to download your July calendar

### CLIENT FEEDBACK

## Talk to us

“ We are always keen to hear what clients think of our service and welcome feedback from within the industry. We'd love to hear from you.

Click here to email us your comments

For more information about your investigation requirements please do not hesitate to contact us

Telephone on **01484 604 354**

or click here to email us